

Key Map for:

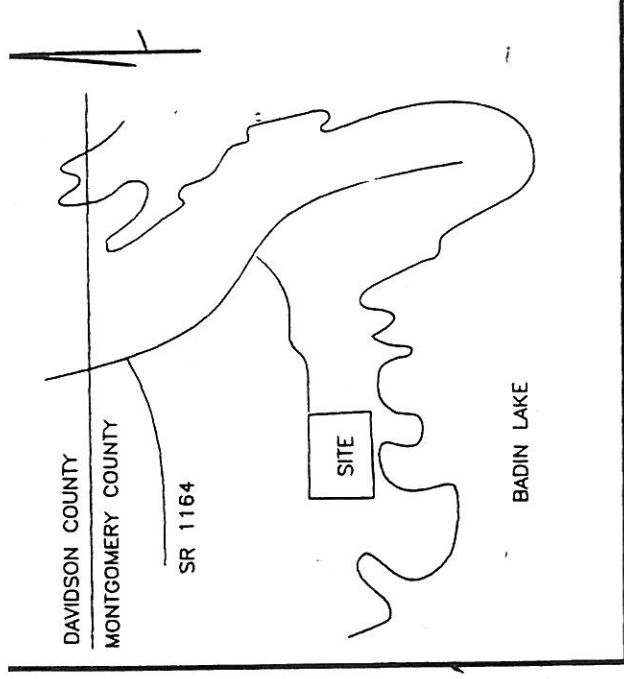
Heron Bay Subdivision, Phase 10 Waters of the United States

Off NCSR 1162 near Troy, N.C.
Eldorado Township, Montgomery County
Date Prepared: July 22, 1998



Scale: 1" = 500'

Sheet 1 of 5



VICINITY MAP NOT TO SCALE

This certifies that this copy of this plat accurately depicts the boundary of the Jurisdiction of Section 404 of the Clean Water Act pursuant to the 1987 Corps of Engineers Wetlands Delineation Manual as determined by the undersigned on this date. Unless there is a change in the law or our published regulations, this determination of Section 404 Jurisdiction may be relied upon for a period of five years from this date.

Charles C. Whicker
Signature of U.S. Army Corps of Engineers Official

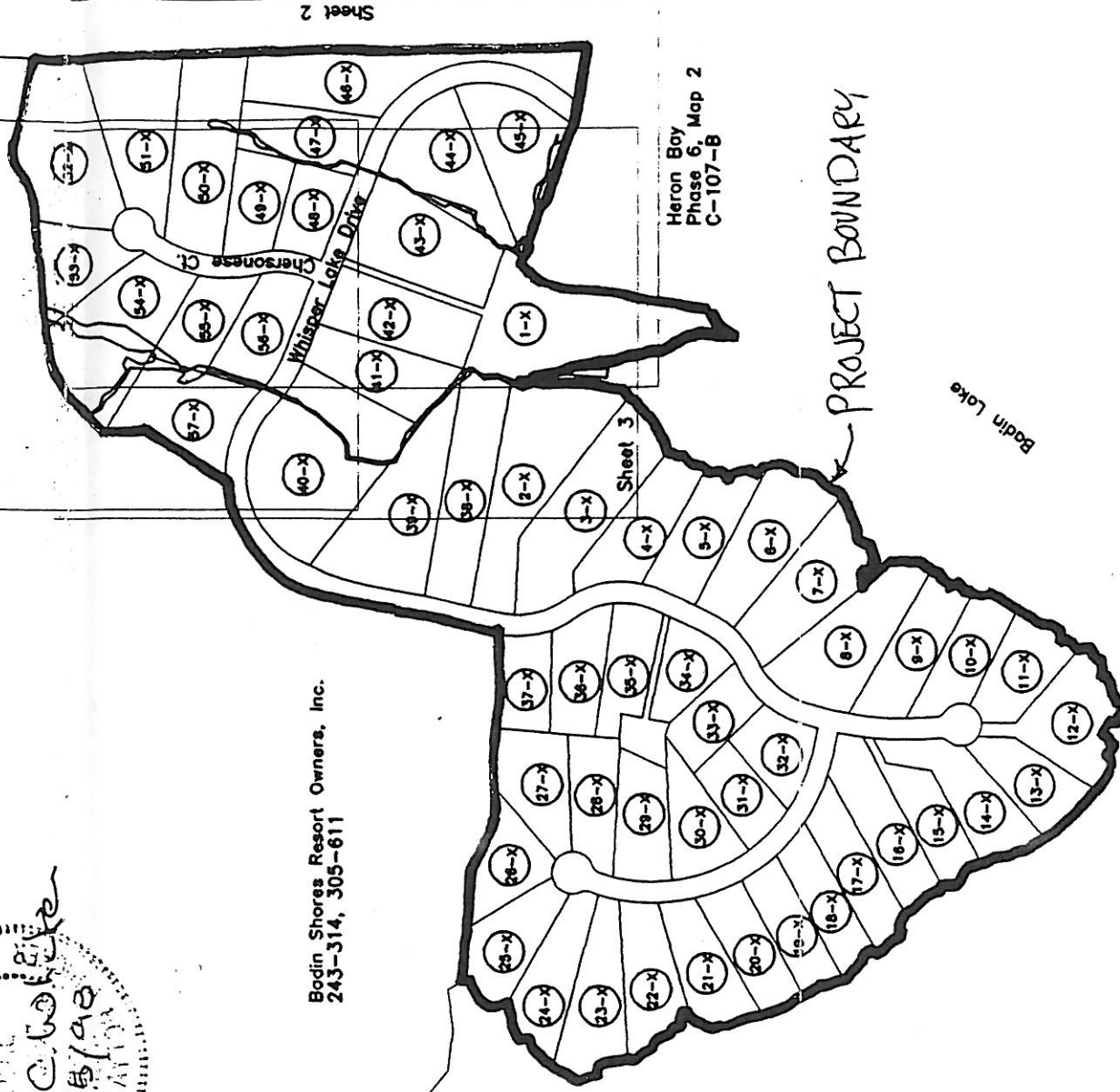
3 October 1998
Date



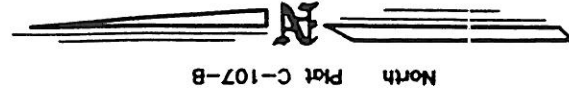
Bodin Shores Resort Owners, Inc.
243-314, 305-611

Sheet 4

N/F Gilbert E. Futrell,
Trustee for
Pearl T. Futrell Estate
272-37



Heron Bay
Phase 6, Map 2
C-107-B



PROJECT BOUNDARY

Badin Lake

Badin Lake

Job No. 98-6447

Prepared By:

**CHARLES C. WHICKER, RLS
& ASSOCIATES, INC.**

Land Surveying and Mapping
17-B Randolph Street
Thomasville, N.C. 27380

Bus: (910) 472-6823 Fax: (910) 472-2892

Project Boundary

